

Friends of Grosvenor & Hilbert Park (FoGH)

Newsletter 17 Winter 2015



picture courtesy of Tunbridge Wells Museum

Love Where We Live Awards

On Wednesday 7th October Chris Hughes, Dave Barnett and myself found our 'smart dress' and set off to the newly refurbished Assembly Hall Theatre for the TWBC Love Where We Live Awards. This annual event recognises individuals, groups and organisations who help in the community, benefit the environment or accomplish personal goals. Friends of Grosvenor and Hilbert Park were one of three finalists in the Best Group Award, alongside Kent High Weald Partnership and Southborough Scouts.



Mayor David Elliott presents the award



After half an hour of bumping into everyone we knew at the reception, we took our seats, and were pleased to see Best Group was first, ah – 'over and done with'. Mayor of Tunbridge Wells Cllr David Elliott read out short pieces about each group, then we reeled with shock to find out we'd won. Staggering to the stage, we collected the award, and posed for the first of many photos. We enjoyed the rest of the evening, with many worthwhile winners, and more smiling for photos. The evening was interesting for networking and finding out about other voluntary groups and organisations in the borough.

Our thanks as the FoGH committee go to everyone who has helped, joined in, and taken part during the past four years. The award is for everyone, and we are working out a safe way to display our growing collection of awards.

Carolyn T Gray

Chairman's Report

As I write this, winter has shown a clear start with the cold weather. The warmth in October and early November has kept the Park looking refreshingly green, showing off the autumn colours which lasted so well. Finally the leaves are down and late fruits are on the ground for the wildlife to take advantage of. The silhouette of the woodlands is trimmed back to the structure of the tree tops.



Autumn colour in the Park

Despite the difficulties with the Community Hub area being out of use, we have still held a variety of enthusiastically supported events this autumn, using the Hilbert Road entrance, as reported elsewhere in this issue. I would like to give a very warm thank you to everyone whose help made this possible. Tunbridge Wells Borough Council named FoGH as their 'Love Where we Live' winners this year: a very welcome recognition of all the work that our volunteers put in.

We've scheduled the planting of the second phase of the Community Orchard a bit earlier this winter, hoping to get the new trees in before the ground freezes. There will be a mixture of different fruits again and then the final planting phase will take place in winter 2016. During next year we will be sowing seeds to establish a wildflower meadow around and within the orchard area. This should make the site an interesting place to watch pollinating insects throughout the year.

I feel a certain sense of relief that this coming winter will see the final heavy construction phase of the HLF funded restoration. The wetlands is the last major work package to be implemented and it will get very churned up by the heavy machinery necessary for the work. However, the works team has chosen to do this at the least damaging time of year from an ecological point of view. Once completed there will be the opportunity to extend the varieties of wildlife that can live and be observed there.

It just remains for me to wish everyone a very happy Christmas season and New Year. Thank you all for continuing to support us through the prolonged upheavals from the restoration work. By the early summer of 2016, it will be wonderful to see the Park emerging from such a comprehensive regeneration scheme, ready for future years of community enjoyment.

Liz Edwards

Update from the Parks Department

The Heritage Lottery Funded regeneration is now entering its final phase, with work starting on the wetland area. We are still on course for a March finish: the wetland is the last of the big projects and the one that will cause most disruption. We have large vehicles using the Auckland Road entrance, so please take care when you are in this area.



Blakedown have moved their works compound from the Rochdale Road entrance and will be working on the new entrance to complete the Community Hub works. We are aware of the mud on the footpaths and Auckland Road: please bear with us and Blakedown will try to keep the paths as clear as possible.

The play area is finally open and Playsafe have left site. There are still some landscaping works to complete, which Blakedown will undertake, along with the reinstatement of the compound area. The play area opened over half term and proved to be extremely popular. I would like to take this opportunity to thank you all for your patience while this part of the project was carried out. I hope you will agree it was worth the wait.

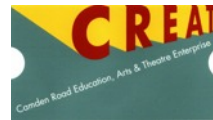
Planting is underway, with shrubs around Marnock Lake and along the nearby path. Trees have gone in at the Oast House and Upper Grosvenor Road entrance. On Saturday 5th December, there will be a ceremonial tree planting to commemorate the partnership between TWBC and Bedgebury Pinetum. Trees will be planted by Greg Clark MP, Cllr David Elliott, the Mayor of Tunbridge Wells and Patrick West, Director of Bedgebury.

There will be updates on progress and information about volunteering opportunities on the noticeboards. Our Community Engagement Officer Steff D'Agorne will be running festive events for children in December and there will be a programme of events for the New Year: please see social media and the noticeboards. If you have any queries about the Park or the HLF project, please contact the Parks Department at parks@tunbridgewells.gov.uk or on 01892 554031.

Peter Every – TWBC Parks & Sports Team

Camden Road Education, Arts & Theatre Enterprise

CREATE presents:



Celtic Christmas Strings.....Friday 4th December 7.30pm

St Barnabas School – A Festive Feast of Harp & Guitar – get set for Christmas!

CREATE Choir Carol-singing.....Saturday 12th December

At Oxfam and on the Pantiles (Times TBC)

Winter Lantern Parade.....Saturday 30th January 5.30pm

Starts in Civic Way, then along Monson Road & Camden Road

Ending with refreshments at St Barnabas School

Every weekend in January - Lantern Making workshops

Saturday 13th February reserve date for the Lantern Parade if bad weather causes postponement

The Lantern Parade sponsor withdrew – do you know anyone who could help? Please contact CREATE!

Tickets from David Prodrick on 0796 619 0428, Alison Beck on 01892 864468 or tickets@camdenroad.org

For full details see the CREATE website www.camdenroad.org & Facebook www.facebook.com/createTW

table 8

The Cafe at the Community Hub!

Paninis & Sandwiches

Macs & Soups

Cakes & Biscuits

Hot & Cold drinks

Daily Specials

Open Daily 9am – 5pm

News from table 8

One of the major changes to the Park thanks to the Heritage Lottery Funding has been the remodelling of 'The Pavilion'. After 11 months closed, the old pavilion and coffee kiosk have been transformed into a Community Hub and indoor café. Having run 'Panini on the Park' for eight years, Lee Story is back behind the counter of 'Table 8'. Open 7 days a week, from 9am to 5pm, take away options are available as well as eating in, at one of his 7 (?) yes, 7, tables. What does Lee think of his new space? "It's absolutely wonderful."

"Now there is a chance to extend the menu due to more kitchen space. I'm working towards next spring/summer and offering fresh salads, pasta and quiches, while remaining competitively priced, and hoping to stay open later in the evenings next summer." New additions are macaroni cheese with a variety of toppings, baked potatoes and Classy Cup O'Soups for the chilly winter days.



Lee has already noticed people who used to pass by are now stopping, and he is hoping the calm and neutral surrounding will appeal to both young and old. He's aware of the great community spirit locally, and wants people to feel they can drop in to share information, meet friends, and find out what's happening around the Park.

I asked a customer what they thought as they popped in to collect some drinks - "A marvellous addition to the Park!" and hopefully everyone else feels the same way.

But where is the 8th table?



The new cafe

Carolyn Gray

Events Roundup

Heritage Open Days



Displays in the church

Once again FoGH volunteers brought a display on the history of Grosvenor & Hilbert Park to St Barnabas Church as part of Heritage Open Days. This four-day festival celebrates England's local history and this year took place during 10th – 14th September.

There was a rush of visitors on Saturday afternoon after the reunion at St Barnabas School, but poor weather on Sunday must have put people off. We enjoyed hearing people's memories of the Park and discussing the ongoing regeneration work. Next year we hope to use the refurbished Hub in the Park for the history display and we look forward to seeing you there.

Mary Hughes



Why conifers? Planting the Wetland

FoGH's first event in the Hub took place on Wednesday 16th September. We were pleased to welcome David Scully CMLI (Landscapes and Biodiversity Officer at TWBC), who kindly gave a talk on the planting in the wetland area.

David explained that when celebrated landscape designer Robert Marnock laid out the plans for the Park, there were two lakes where the wetland is now. The surrounding planting included conifers (see right). Following this idea, David worked with Bedgebury Pinetum to identify suitable trees for the Park.

We learnt fascinating information about conifers, which were the main food plant of many dinosaurs. They are found in most habitats and have many uses, but some species are at risk. Tree planting in the wetland area begins on Saturday December 5th, when Mayor David Elliott, Greg Clark MP and Patrick West from Bedgebury plant the first trees. For more information on some of the trees, see page 6. Our thanks to David for an interesting and informative talk.

Mary Hughes



The Lower Lakes

Apple Day – A Pressing Time!



Apple-themed activities

On Saturday 10th October FoGH held our inaugural Apple Day, with lots of healthy fruity fun. We christened the new apple press, provided through the Heritage Lottery Fund regeneration. People tried their hand at pressing apples, sampled the juice and could take a bottle home with them. For those feeling peckish, there were toffee apples and three types of apple cake.

The event also marked World Mental Health Day and Kent High Weald Partnership were on hand to highlight the day, with a range of activities including cake decorating, wood working skills and craft activities.

It was a really fun time: everyone enjoyed themselves and it was great to see kids drinking juice that had been an apple minutes before.

We wanted to establish the idea of an annual Apple Day right from the start of the orchard, although for this first event we had to bring in most of the apples from an orchard in Matfield. As the Community Orchard develops, tree sponsors will have the opportunity to press their own fruit in future years. Sincere thanks to James Melville for all his hard work!



Chris Hughes

(To sponsor a tree in the orchard in the final phase in 2016, please contact 532835 or editors@FoGH.org.uk).

Bird Box Building

FoGH and Kent High Weald Partnership joined forces on Saturday 24th October to enable local families to make homes for nature. Work around the Community Hub meant the event had to move up to the Oast House and we were also up against the Puppetry Festival. However, a steady stream of people made their way through the Park and all the pre-prepared kits had been used by the time the event ended at 1pm. Bat boxes were also on offer and we hope that local wildlife will benefit.

This free event is one of a number provided by FoGH during the year. If you're not already a member, please consider joining, as your subscription and support help us to continue our work.

Mary Hughes



All ages built bird boxes

Community Engagement Officer Update (or Steff's Sum Up!)

With autumn in full swing in the Park, it has inspired an array of fall-themed events for visitors to enjoy. These included the Apple Day (kindly organised by FoGH) to a Fungi Foray, led by the very modest Bryan Bullen (who is definitely an expert, even if he doesn't consider himself to be!) The Park is looking fantastic at the moment, draped in autumn colour, and the play area was officially open from October half term.



The Fungi Foray

I hope most of you would agree that the HLF works are now starting to make a tangible difference to everyone in the Park (even if there are quite a few disruptions still around with the landscape works in full swing).



I have been enjoying making plans for activities in the Community Hub now that the building works are finished. These include an advent calendar making session for children aged 8+ in the Hub in late November. The play area is now full of children at weekends, with access points at either side, to allow the landscape works to continue progressing around the Hub.



The new play area



A volunteer at work

The weekly Thursday volunteer team has been working hard around the Park coppicing parts of the Hilbert Woods, enabling each hazel stool to last for up to 800 years (rather than the usual 80)! The team is also increasing in numbers, and we are always looking for more volunteers, so just drop me an email if you would like to join us: steff.dagorne@tunbridgewells.gov.uk. We also now have a monthly weekend task, for those people who cannot make the mid-week task. The next weekend task is in December on Saturday 5th, so please do come along and help us manage the woodlands.

The next major works will have started in the Park by the time you read this article: the wetlands. This will make the area look a bit of a mud bath to start with, but after a month or so the boardwalk will be put into place right across the area and it will start to look a bit more like a wetland again! I am very excited about organising some pond dipping events next summer from the dipping platforms that will soon be in place.



Work starts on the wetland



Autumn leaves

The final thing I have been up to recently is starting to get to get plans in motion for the Park's interpretation. We will be placing some great interpretation of various forms all around the Park. There will be images of what the Park used to look like in the café and information boards at a few fixed locations in the Park. These will educate visitors about what makes Grosvenor and Hilbert Park so special.

I would just like to finish this brief update with a quick thank you to everyone that lives around and visits the Park, for putting up with the disturbance that this work has caused to you all. I promise it will all be over very soon and the finished product will definitely be worth the wait!

Steff D'Agorne

Britain in Bloom It's Your Neighbourhood 2015 Results

Following the judges visit in July, it seemed a long wait until the results came through in September! The judges were shown the Community Orchard, boardwalk and Hub area. FoGH were congratulated on our community events and the orchard, although there was concern that the fruit trees were not being well-watered and some were looking stressed.



The orchard in sunshine



Groups in this category are graded according to their Community Participation, Environmental Responsibility and Gardening Achievement. As before, we gained highest marks on Community Participation – there's room for improvement in the Gardening Achievement! We were very pleased to achieve Level 4 (Thriving), with 70 points out of a possible 100. This is an improvement from last year's result when we were classed as Level 3 (Developing). Once the HLF work is completed in spring 2016, there will be more freedom to do our own planting and opportunities to get involved.

Mary Hughes

Playgrounds in the Park

The completion of the lovely new playground made us wonder about how play equipment fitted into the history of the Park. We know that the Grosvenor Recreation Ground land was donated by John Stone-Wigg and opened as the town's first municipal park in 1889. From the start, play equipment formed part of the Park. Starting at the southern end of the site, the Marnock Lake had been landscaped from one of the former reservoirs.



Aerial photo
1947



The swimming
baths

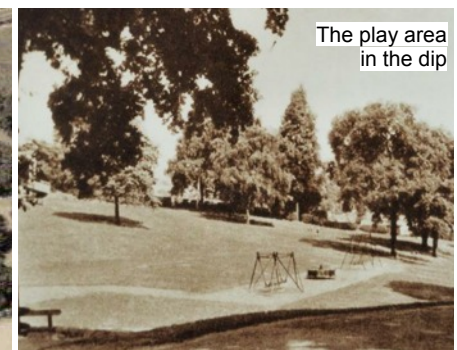
The open-air swimming bath filled the next section. Then an area of grass, roughly where the current Bowls Green is, included swings for children. The most northern section of the Park then was two Lower Lakes, with bridge and paths set in the hollow. The swimming pool was a major entertainment for children, but after World War Two it was closed, then filled in during 1954/5.

In 1895 a shelter costing about £30 was built for the children's playground. The rest of this area was planned as a cricket ground and lawn tennis courts. The first tennis court opened in 1904/5, but popular opinion led to a Bowls Green instead of a cricket ground. This opened in 1912, and the children's shelter was converted into a bowling Pavilion, with the playground moved. My 2012 interview with local resident Phyllis Stace suggests this was near the Auckland Road entrance.

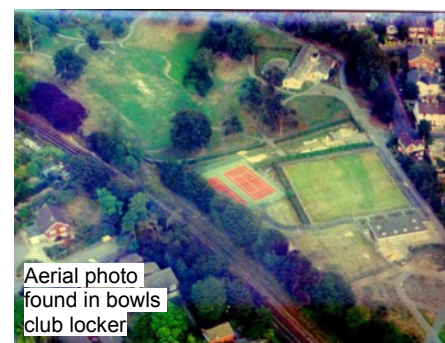
Play equipment was located near the Lower Lakes before they were filled in and stayed there until the 1980s. In this pre-1930s photo, you can see one of the Lower Lakes on the left-hand side, and the play area in the centre. A children's shelter is above and to the right of the play area. The right-hand photo, taken after the Lower Lakes were filled in during 1934, shows the well-known swings including the 'family swing'.



The Park
pre-1930s



The play area
in the dip



Aerial photo
found in bowls
club locker

In 1971 a new Bowl Pavilion was built, along with a new playground, on the site of the former open-air pool. My memories of the Park begin in 1995 when we moved to the area, with our first child. Two more children followed in the next five years, and we spent many days at the playgrounds. In 1995 the Park looked like the aerial photo.

A toddler playground was by the Auckland Road gates, with a steep slope at the far end near the tennis courts. It was surrounded by a hedge, and had various metal pieces – swings, slide, rockers, and odd climbing and balancing frames.



Swings near
Auckland Road
gates 1998



Helter-skelter
2012

Walking past the Pavilion (there was of course no coffee kiosk!) we'd get to the cycle path, and on the other side was a playground for older children. This had a strange mix of wooden and metal play equipment, but favourites were the helter-skelter slide, and a mini fort (very mini compared to our new one). A typical morning in the Park would finish with feeding the ducks, before heading home for lunch.

This is the moment where I am glad I dated all my photos – in July 2001 a new playground opened, on the site of our current one. However, a gate still led to the old playground, where the children are photographed on the slide in 2012. That was just before it was removed, and replaced with the football/basketball courts.

Another part of 'play in the park' were the activities at the Satellite Youth Club (top right of aerial photo), where people remember a paddling pool at the back, and holiday clubs. Away from this end of the Park, the skate-park opened in 2000. And there was always football, kite flying and tobogganing.

We give thanks to John Stone-Wigg for the many generations of children with memories of playing in the Park, rather than hanging around on the streets. Much of this information is in the book 'Grosvenor and Hilbert Park' by Philip Whitbourn and Ian Beavis. (Thank you!)

Carolyn T Gray



Skate park 2015

Bedgebury Trees at Grosvenor & Hilbert Park

In partnership with Bedgebury Pinetum, some rare and endangered trees are coming to the Park. Many species of conifer are at risk, affected by habitat loss and often found only in a small area of their native country. Threatened species are listed as Vulnerable, Endangered and Critically Endangered.



Nothofagus alessandri in the wild

Most of the trees are conifers, but deciduous trees are included in the planting. We should note that, although they may grow large in their native area, the trees are unlikely to reach their maximum size here. Here's a closer look at some of the trees.



Cyprus Cedar

Critically Endangered, Ruil (*Nothofagus alessandri*) is a southern beech endemic to Chile, restricted to a few scattered locations. This primitive deciduous tree is in danger due to the development of commercial conifer plantations. The Cyprus Cedar (*Cedrus brevifolia*) is found only in a small area of the Troodos Mountains in western Cyprus, and is at risk from fire (Vulnerable). It is an evergreen conifer with blue-green needles, with branches in horizontal layers.

Brewer's Weeping Spruce (*Picea breweriana*) develops drooping branches with curtains of foliage. It has orange-brown shoots and 15 cm long cones. Found only in fragmented populations in parts of California and Oregon, the species is at risk from forest fires (Vulnerable).



Brewer's Weeping Spruce



Ginkgo biloba

A 'living fossil', the maidenhair tree (*Ginkgo biloba*) is the sole survivor of an ancient group of trees from before the dinosaurs. The unique fan shaped leaves turn golden in autumn. The wild population is confined to a small area of China (Endangered).



Likiang Spruce



Serbian Spruce in the wild

Native to Bhutan & China, the evergreen Likiang Spruce (*Picea likiangensis*) has dark blue-green drooping foliage, with cones over 12cm long. The population has reduced by over 30% due to logging (Vulnerable).

Restricted to four locations, the Serbian Spruce (*Picea omorika*) forms a tall narrow pyramid with flattened green needles (think of a narrow Christmas tree). It is threatened by forest clearance and wildfires (Endangered).

These lovely trees will add a new dimension to the wetland area, in keeping with Robert Marnock's original design.

Thanks to David Scully CMLI for his help. **Mary Hughes**

Sport Report– Football

St John's Yard played their first games at Cadogan due to works around the Oast House, but returned in October. They play in Division 3 now: a tricky transition. They lost the first 5 matches, but returned to winning ways with a 14 – 0 victory against Paddock Wood. This did wonders for their goal difference! A second victory against Bricklayers Arms left them in 7th, but the same team soon knocked them out of the WKSFL Intermediate Cup.

Club secretary Tony Vanns says they are scoring well, but letting too many goals in! He is confident things will improve and looking forward to the rest of the season. The team are glad to be back at Hilbert and can be seen playing in green and white hoops on Sundays.



A keenly contested ball

Mary Hughes



The U13's (C&DJFL) at Hilbert

Tunbridge Wells Foresters formed in 1982 to bring football to boys and girls and we are now the major footballing provider in the town. We were the first club in the country to adopt the principles of mini soccer as a basis for our players to develop at a junior level and then move on into adult football.

From small beginnings Foresters now has around 500 players and we continue to grow. We have over 40 teams from U6's to U18's, through to our senior men's team, along with ever expanding girl's teams from U7's to U14's. This season our U13's, U14's & U15's are playing matches on the pitches at Hilbert, confirming our association with this wonderful Park. **Stuart Newman**

For more information about the clubs, see www.wksl.org.uk/ and www.forestersfc.com/

View from the Allotment

Purple sprouting broccoli



Winter is coming – we should have dug over, but we have just moved house and have not had the time. In fact the allotment is looking very sorry for itself and the weeds have had a field day!

There was a fairly good harvest of squash this year, they are delicious and keep over winter.

The potatoes are stored safely. We have the old favourites growing: carrots, artichokes, parsnips, purple sprouting, perpetual spinach. This year we have tried cavolo nero – a tasty type of kale, this is growing well and is a useful winter crop.

Just wondering: they say parsnips taste better after a frost – is this true? Ours taste completely different from those sold in supermarkets, so much nicer.

The mild autumn weather meant that, unusually, we still had baby courgettes in November. We need to sort the shed out and do some digging soon: next season seems a long way off!

Jane Melville

Dogs in the Park

Hello, my name is Mia and I am an 11 year old Flat Coat Retriever. My parents were called Mushroom and Soup and I have 5 brothers. I was born in Hawkhurst, but have lived in Tunbridge Wells all my life.

My family say I have a lovely personality and I certainly love people! The only thing I don't like is the foxes that come in our garden – I bark and bark at them! They sit on the garage roof and I can't get to them.

My favourite thing ever to do is to run around the Park finding anything to eat. I love food – anything! I once ate a birthday cake and a block of cheddar cheese. My family were not pleased. I even ate some school shoes when I was a puppy.

Although I am 11 I have loads of energy – my family think I have ADHD! I do sometimes get tired now as I am getting older. If you see me in the Park please say hello and give me a cuddle.

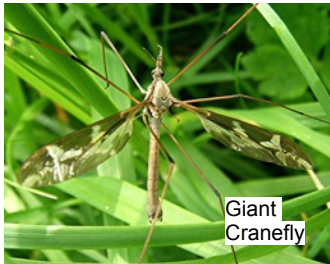
Alison Jupp



Mia

Mini beasts in the Park 2015

The Museum's Young Nature Hunters and Mini Beast Safari sessions returned to the Park in August. Although the weather was a bit erratic that month, we had a good day for spotting our smaller wildlife and we found over seventy species.



Giant Cranefly

One of the highlights of the day was a Southern Hawker – one of our more spectacular dragonflies. Usually we just see these at a distance or doing a brief flypast, but on our morning session one was settled low down on the edge of Folly Shaw and everyone was able to have a really close look at it. Almost as big as a dragonfly, though not brightly coloured, is the Giant Cranefly – a wetland species that is one of the Park's specialities. We saw several of these flitting around the woodland edge. They can be

distinguished from other crane flies by their 10 cm leg span and patterned wings.

Five of the Park's butterfly species appeared in the afternoon, including the vividly coloured Small Copper and Common Blue. More unusually, we had eight types of moths. Among them was a new record for the Park – the migratory White Point.

Many butterflies and moths regularly fly across the Channel in summer, but they don't always reach as far inland as Tunbridge Wells. Another new record was the nationally scarce soldierfly *Chorisops nagatomi* which is partly metallic green and partly deep yellow.



Small Copper



Male Common Blue



White Point



Chorisops nagatomi



Lesser Marsh Grasshopper

Almost all of the Park's regular grasshoppers and crickets were in evidence, and there was one surprise here too. Earlier in the month, the Lesser Marsh Grasshopper was found for the first time in the Tunbridge Wells area on our mini beast sessions at Dunorlan, and now it appeared at Grosvenor and Hilbert too. This grasshopper used to be a scarce species of coastal marshes, but in recent years it has been spreading to more inland localities, making a welcome additional to our local fauna.

Dr Ian Beavis

Dates for your Diary

TWBC Volunteer Days.....Every Thursday 10am — 3pm

Led by Community Engagement Officer Steff D'Agorne
Learn new skills & help conserve the Park for future generations
Meet outside the Oast House & dress appropriately



Woodland Edge Management.....Saturday 5th December 10am – 12.30pm

Kent High Weald Partnership volunteer day
Clear scrub to improve this important habitat for biodiversity
Meet at the Hilbert Road gates & dress appropriately



Tree Planting.....Saturday 5th December 2pm

The start of the Bedgebury wetland planting scheme
Join local dignitaries as the first trees go in



Christmas Carols.....Saturday 5th December 3 – 4pm

At the Community Hub.
Join FoGH & the CREATE Choir for Christmas carols
Do bring friends and family – there will be free mince pies!



Coppice & be Merry!.....Thursday 10th December 10am – 3pm

Join KHWP to celebrate the coming of Christmas!
Hazel coppicing, wreath making & mince pies!
Meet at the Hilbert Road gates & dress appropriately



Community Orchard Tree Planting.....Saturday 12th December Details TBC

26 more trees go in: the second phase of the community planting
Dedication tags for the first phase will be installed
Weather-dependent: wear appropriate clothing & footwear



Seeing the Light.....Thursday 17th December 10am – 3pm

TWBC Volunteer Day – glade creation & coppicing
Meet outside the Oast House & dress appropriately



Chop Chop.....Thursday 11th February 10am – 3pm

Kent High Weald Partnership volunteer day
Enjoy the traditional craft of coppicing
Meet at the Hilbert Road gates & dress appropriately



Get on Deck!.....Wednesday 9th March 10am – 3pm

Kent High Weald Partnership volunteer days
HLF funded boardwalk replacement in Roundabout Wood
Meet at the Hilbert Road gates & dress appropriately



Get on Board!.....Thursday 10th March 10am – 3pm

Kent High Weald Partnership volunteer day
More HLF funded boardwalk replacement in Roundabout Wood
Meet at the Hilbert Road gates & dress appropriately



Watch out for posters & see our website www.fogh.org.uk Facebook www.facebook.com/GrosvenorHilbert or Twitter twitter.com/FofGH

FoGH Contact Details

Liz Edwards (Chairman) chair@fogh.org.uk
Jane Melville (Secretary) Friendsghrp@aol.com
Website www.FoGH.org.uk
Facebook www.facebook.com/GrosvenorHilbert
Twitter <https://twitter.com/FofGH>

Newsletter editors:
editors@FoGH.org.uk
15 Dorking Road,
Tunbridge Wells, TN1 2LN

To join, contact the Secretary on Friendsghrp@aol.com or at 41, Dorking Road, Tunbridge Wells, TN1 2LN

The Editors (Carolyn Gray & Mary Hughes) welcome all contributions for consideration.
Please try to keep to about 300 words or less, and include your name and contact details.

Our sincere thanks to Tunbridge Wells Borough Council for all their support in printing and collating hard copies of this Newsletter



Other Contacts & Useful Information

TWBC Parks Service 01892 554031
Out of Hours Service 07920 534369
Toilets: Opening Hours 7am - 6pm

Images courtesy of Dave Barnett, Dr Ian Beavis, Jo Cartwright, Steff D'Agorne, Cally Fiddimore, Carolyn T Gray, Chris Hughes, Kent Archives (KCC), Alison Jupp, Jane Melville, Stuart Newman, Fred Scales, Lee Story & Tunbridge Wells Museum